

international mtbo event  
and world cup round  
15-17 april 2011  
Tapolca, Hungary

# hungarian cup



BULLETIN II

## Welcome note

Dear Orienteering Friends,

It is our honor and pleasure to invite you to Tapolca to participate in the first round of the renewed MTBO World Cup and the Hungarian MTBO Cup. This event, one of the largest MTBO events in the World, also serves as the opening of the international MTBO season in Central Europe. We hope that you will enjoy both the sporting and the social side of this very special event.

Miklós Juhász  
President  
Hungarian Orienteering Federation

## Location

Tapolca is a small town with a historic atmosphere 12km North of Lake Balaton and 45km SW of Veszprém.

The town is the center of the Tapolca basin famous for its volcanic mountains and wine growing tradition. The name Tapolca itself is of Slavic origin and refers to thermal springs. Visitors are attracted to the area every season by the historic and natural treasures. The most notable attractions being the 300m long boat trip in the cave under the town, and the various specialty vineyards in the area.



## Patrons

Jenő Lasztovicza	Chairman Veszprém County Assembly, Chief Patron
Miklós Juhász	President of the Hungarian Orienteering Federation
László Császár	Mayor of Tapolca
Gyula Porga	Mayor of Veszprém
Ferenc Csík	Managing Director of the Veszprém County Sports Council
Zoltán Gyapai	Mayor of Óskü

## Organizing Committee

President	Miklós Mets
Vice presidents	Péter Molnár, Sándor Tálás, Gábor Domán
Course setter	Miklós Mets
IT systems	Tamás Jankó, Dániel Marosffy, Tamás Tóth
Finances	Katalin Ézsiás
Technical matters	Gábor Domán
Coordinators	Melinda Németh Zsoltné, Petra Vass
Organisations	Hungarian Orienteering Federation Hangya SE Tapolcai Honvéd SE Veszprém County Orienteering Federation

## Controllers

IOF Advisor Thomas Wieser  
National Controller Ágoston Dosek

## Program

14 April Thursday World Cup team arrivals, Model Event  
15 April Friday World Cup Sprint, Tapolca Sprint, Training  
16 April, Saturday World Cup Middle, Hungarian Cup Middle  
17 April, Sunday World Cup Long (mass start),  
Hungarian Cup Long (mass start)

Hosted events Hungarian Championships  
Austrian Cup Prologue  
Czech Cup  
Slovakia Cup  
SLO-CRO League

## Competition Rules

- IOF MTBO rules 2010
- International specification for MTB Orienteering Maps 2010
- Special rules for MTBO World Cup 2011

Bulletin #3 will list all cases where rules and specifications are modified.

Off road riding is allowed in areas marked as forest or freely rideable open area. Off road riding is strictly prohibited in all other areas, including settlements, cultivated land, orchards, vineyards and all other open areas not marked as rideable.

Competitors riding off road in restricted areas are responsible for any damage claimed by the landowners.

## Classes, fees and entry regulations

World Cup – ME and WE with no age restriction

Entry fee for World Cup: EUR 35/day

The maximum entry per IOF member federation is 6 competitors per event according to MTBO World Cup rules 2011. All IOF member federations, including provisional members, are eligible to participate.

Competitors who are representing a Federation shall have full passport holding citizenship of the country of that Federation.

Hungarian MTBO Cup  
MW -14, 15-17, 18-20, 21EAC, 40, 50, 60, M21B, Open  
Public event, no restriction on entry

Tapolca Sprint  
MW -17, 18-39, 40-, Open  
(same courses as World Cup ME and WE)  
Public event, no restriction on entry

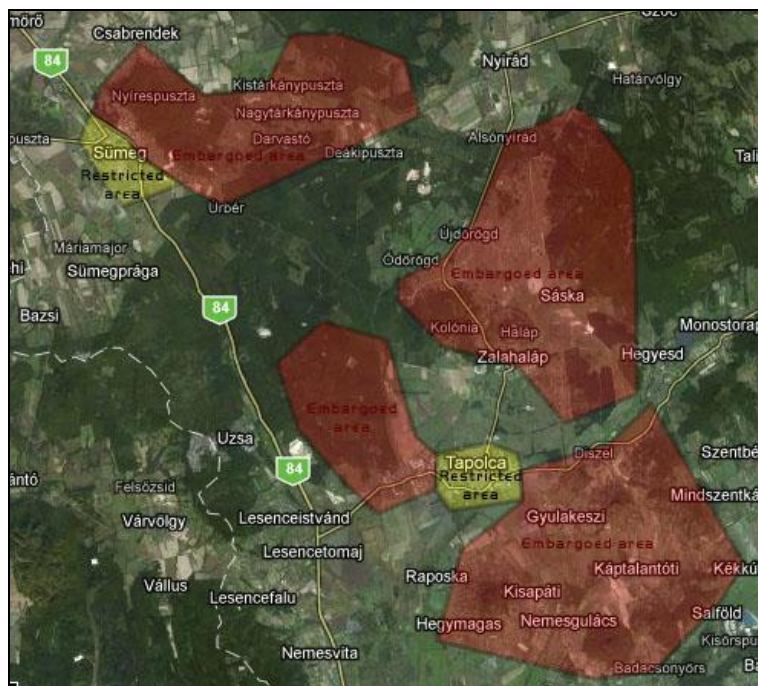
Entry fee for Hungarian Cup and Tapolca Sprint

Youth (-17) EUR 4/day  
All other EUR 8/day

All entries for Hungarian Cup and Tapolca Sprint carry a 50% late fee if submitted after the deadline, and a 100% late fee if submitted after 3 April.

## Embargoed area

The area shown on the map around Tapolca and Sümeg, is embargoed for all orienteering activities, unless specifically permitted by the Organizers.



The above areas are out of bounds for all potential World Cup and Hungarian MTBO Cup participants and team members, including competitors, team leaders, coaches, doctors, escorts, and any other person who through their knowledge of the terrain may influence the result of the competitions.

Spelt out in details this means

- no organized orienteering activity may take place in the area,
- no training sessions may take place in the area,
- no one with potential connection to a team (athletes or others) may visit the area.

The areas of Tapolca and Sümeg are restricted for MTBO activity. They are open for pedestrians, cars, and leisurely cycling, but strictly forbidden to cycle with the intention to test route choices.

Copy of the most recent orienteering map of the area will be accessible on the event website: [www.mtbo.hu/series.php](http://www.mtbo.hu/series.php).

## Map details

Sprint	1:5,000 / 5m
Middle	1:15,000 / 5m
Long	1:20,000 / 5m

Surveyed in 2010/2011

## Courses

Preliminary information on the courses:

<i>World Cup</i>		<i>Exp. winning time (min)</i>	<i>Distance (km)</i>
Sprint	M	25	7
	W	20	5
Middle	M	55	14
	W	45	11
Long	M	110	30
	W	90	22

Information on Hungarian Cup courses to be published early 2011.

## Terrain description

Sprint area is planned in the area that combines urban setting and forested area with numerous paths, open areas, abandoned buildings, and numerous man made features.

Middle and Long events are planned in an area of typical karst forest with numerous paths and roads, dense vegetation with large open areas. Altitude: 150m to 450m.

Some tricky steep sections may challenge riders. Stones and thorns are abundant.

## Time keeping system

Sport Ident will be used on all events with SI-Card 9 compatible Control Stations.

Everybody should provide the number of their SI cards with their entry.

SI cards can be rented from Organizers for EUR 1 / day.

## Training opportunities

No official training camps will be organized before the World Cup, but the Organizers are happy to provide maps and help with organizing trainings upon request.

After the World Cup training opportunities will be offered on the maps used for 2010 and 2011 World Cup.

All training requests should be sent to [training@mtbo.hu](mailto:training@mtbo.hu) address. Please note that biking in the forest is restricted in Hungary.

Model event will be organized Thursday afternoon accessible by bike from Tapolca.

## Event Centre

Tapolca Event Hall  
Kisfaludy utca 2-6., Tapolca  
N46° 53' 00" E17° 26' 00"

Registration, team leaders' meeting and prize giving ceremony Friday and Saturday evening will take place at the Event Center.

The restaurant in the Event Center will provide self service dinner exclusively to World Cup and Hungarian Cup participants. Pre-ordering is possible to ensure availability.

Wi-Fi internet will be available at the Event Center.

## Accommodation

Five different classes of accommodation (hotel / guest house / dormitory / gym hall / camping) will be offered by the Organizers to ensure that all participants can find a place that suits their need and budget.

On-line accommodation booking form will be available on the event web site.

### Cat A

Hotel \*\*\*

Double room with shower, breakfast included

Price: EUR 30 / person / night in double room

### Cat B

Guest house

Double room with shower, breakfast included

Price: EUR 22 / person / night in double room



**Cat C**

Dormitory

Sleeps 3 persons per room, one shower shared by two rooms

Price: EUR 12 / person / night

**Cat D – only for Friday and Saturday night**

Gym hall / own equipment

Common shower facilities

Price: EUR 5 / person / night

**Cat E**

Camping / own equipment in area of Sport Complex

Common shower facilities, 230V provided

Price: EUR 3 / person / night

**Please note that no overnight stay allowed in the Finish areas due to restriction by the landowners.**

**Catering**

Dinner offered in the Event Center Thursday through Saturday, and can be pre-ordered at discount price. Meal tickets (in limited numbers) will also be available at the entrance.

On-line dinner booking form will be available on the event web site.

Food and equipment traders will be available in the Finish area.

**Media services**

Media representatives are cordially invited to come to Tapolca to cover the World Cup races.

Registration for media entry should be made in email to [info@mtbo.hu](mailto:info@mtbo.hu) by 28 February 2011. Media facilities will be available only to registered media representatives.

**Entry permits to Hungary**

Hungary is a full Schengen member state. The following IOF member countries require visa to Hungary: Belarus, China, Chinese Taipei, Colombia, Cuba, Ecuador, Georgia, India, Indonesia, Jamaica, Kenya, Kazakhstan, Kyrgyzstan, DPR Korea, Moldova, Mongolia, Mozambique, Pakistan, Puerto Rico, Russia, Somalia, South Africa, Thailand, Turkey and Ukraine.

Visas have to be applied for at your nearest Hungarian embassy. The organizers will assist participants as required to obtain visas.

**Please make sure that you allow for sufficient time (at least 3 months) for invitation letters and visa processing.**

Please note that visa regulations are subject to change. Please double check your specific visa requirements.

**Local weather**

Middle of April in Hungary is characterized by mild sunny weather: 16-21C in the daytime, 5-10C in the night, with 7 hours of sunshine on average.

Please note that April weather is notoriously unpredictable. Meteorological records show temperatures as low as -4C and as high as +27C. "April is capricious" according to Hungarian folk wisdom.

## Transportation

Model and Sprint are easily reachable by bike. Middle and Long are also reachable by bike (10 to 15km flat), but local transport option will be offered for a fee.

Transportation to and from Budapest Airport can also be ordered from the Organizers for a fee.

Please inform the organizers in due time of any assistance you require with transportation.

Hertz offers preferential car rental rates for World Cup and Hungarian Cup competitors. Details to be published on the web page of the event.

## Payments

Payments by World Cup participants must be made by bank transfer to

Account name: Magyar Tajekozodasi Futo Szovetseg  
Account number: 11763055-41843882  
Bank name: OTP Bank  
Bank address: Deak Ferenc utca, Budapest, Hungary 1052  
IBAN: HU27 1176 3055 4184 3882 0000 0000  
SWIFT: OTPV HUHB

Entries to the World Cup, accommodation, catering and transport will be accepted and confirmed after the arrival of the transfer.

Deadline for transfers reaching the organizers is 11 March 2011.

Hungarian Cup participants may pay in cash upon registration.

## Important deadlines

### World Cup

Preliminary entries (accommodation booking deadline)	28 February
Entry of teams	11 March
Full payment	11 March
Request for transportation	11 March
Final modifications	25 March

### Hungarian Cup and Tapolca Sprint

Reservation of accommodation	11 March
Entry	25 March
Entry with 50% late fee	3 April

## Additional information

Sándor Tálas: info@mtbo.hu, M: +36-20-364-2734

Updates and additional information: [www.mtbo.hu/series.php](http://www.mtbo.hu/series.php)