

international mtbo event
and world cup round
15-17 april 2011
Tapolca, Hungary

hungarian cup



BULLETIN I

Welcome note

Dear Orienteering Friends,

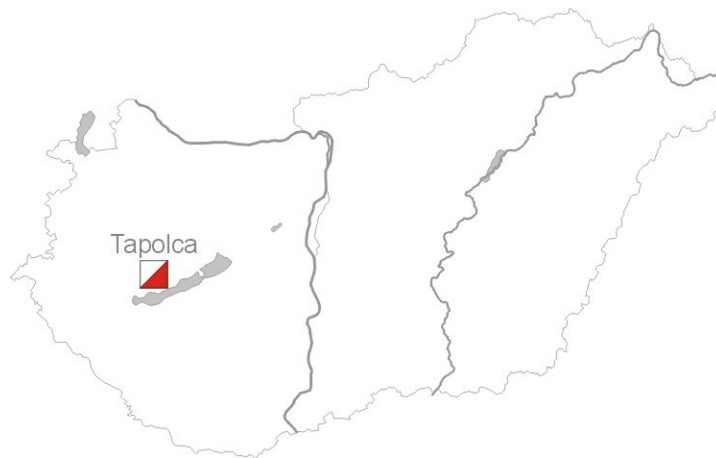
It is our honor and pleasure to invite you to Tapolca to participate in the first round of the renewed MTBO World Cup and the Hungarian MTBO Cup. This event, one of the largest MTBO events in the World, also serves as the opening of the international MTBO season in Central Europe. We hope that you will enjoy both the sporting and the social side of this very special event.

Miklós Juhász
President
Hungarian Orienteering Federation

Location

Tapolca is a small town with a historic atmosphere 12km North of Lake Balaton and 45km SW of Veszprém.

The town is the center of the Tapolca basin famous for its volcanic mountains and wine growing tradition. The name Tapolca itself is of Slavic origin and refers to thermal springs. Visitors are attracted to the area every season by the historic and natural treasures. The most notable attractions being the 300m long boat trip in the cave under the town, and the various specialty vineyards in the area.



Patrons

László Császár	Mayor of Tapolca, Chief Patron
Miklós Juhász	President of the Hungarian Orienteering Federation
Gyula Porga	Mayor of Veszprém
Ferenc Csík	Managing Director of the Veszprém County Sport Office
Zoltán Gyapai	Mayor of Öskü

Organizing Committee

President	Miklós Mets
Vice presidents	Péter Molnár, Sándor Tálás
Course setters	Miklós Mets
Advisor	Ágoston Dosek
IT systems	Tamás Jankó, Dániel Marosffy, Tamás Tóth
Finances	Katalin Ézsiás
Technical matters	Gábor Domán
Coordinators	Melinda Németh Zsoltné, Petra Vass
Organisations	Hungarian Orienteering Federation Hangya SE Veszprém County Orienteering Federation

Controllers

IOF Advisor Thomas Wieser
National Controller Ágoston Dosek

Program

14 April Thursday World Cup team arrivals, Model Event
15 April Friday World Cup Sprint, Tapolca Sprint, Training
16 April, Saturday World Cup Middle, Hungarian Cup Middle
17 April, Sunday World Cup Long (mass start),
 Hungarian Cup Long (mass start)

Hosted events Hungarian Championships
 Czech Cup
 Slovakia Cup
 SLO-CRO League

Competition Rules

- IOF MTBO rules 2010
- International specification for MTB Orienteering Maps 2010
- Special rules for MTBO World Cup 2011

Bulletin #3 will list all cases where rules and specifications are modified.

Off road riding is allowed in areas marked as forest or freely rideable open area. Off road riding is strictly prohibited in all other areas, including settlements, cultivated land, orchards, vineyards and all other open areas not marked as rideable.

Competitors riding off road in restricted areas are responsible for any damage claimed by the landowners.

Start Groups

World Cup – ME and WE with no age restriction

Entry fee for World Cup: EUR 35/day

The maximum entry per IOF member federation is 6 competitors per event according to MTBO World Cup rules 2011.

Competitors who are representing a Federation shall have full passport holding citizenship of the country of that Federation.

Hungarian MTBO Cup
MW -14, 15-17, 18-20, 21EAC, 40, 50, 60, M21B, Open
Public event, no restriction on entry

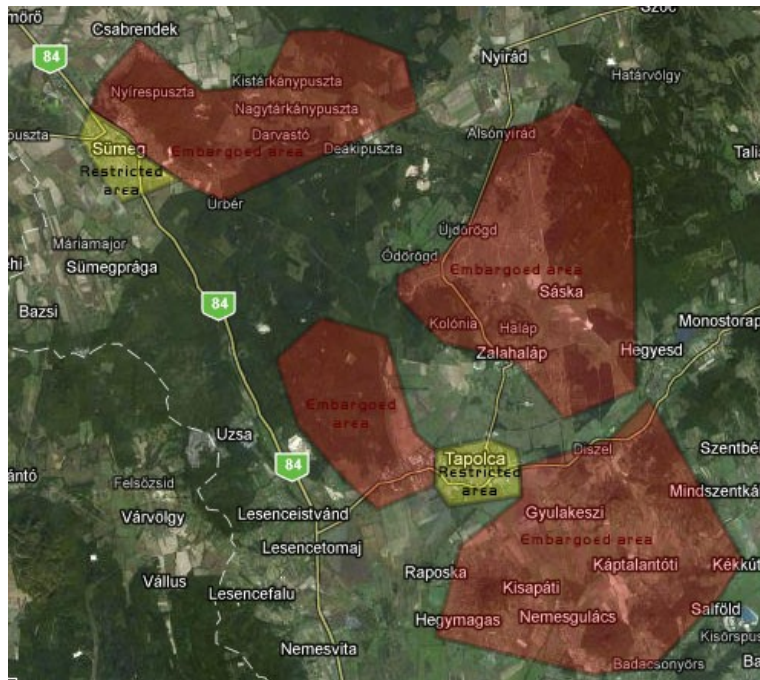
Tapolca Sprint
MW -17, 18-39, 40-, Open
(same courses as World Cup ME and WE)
Public event, no restriction on entry

Entry fee for Hungarian Cup and Tapolca Sprint

Youth (-17) EUR 4/day
All other EUR 8/day

Embargoed area

The area shown on the map around Tapolca and Sümeg, is embargoed for all orienteering activities, unless specifically permitted by the Organizers.



The above areas are out of bounds for all potential World Cup and Hungarian MTBO Cup participants and team members, including competitors, team leaders, coaches, doctors, escorts, and any other person who through their knowledge of the terrain may influence the result of the competitions.

Spelt out in details this means

- no organized orienteering activity may take place in the area,
- no training sessions may take place in the area,
- no one with potential connection to a team (athletes or others) may visit the area.

The areas of Tapolca and Sümeg are restricted for MTBO activity. They are open for pedestrians, cars, and leisurely cycling, but strictly forbidden to cycle with the intention to test route choices.

Copy of the most recent orienteering map of the area will be accessible on the event website: www.mtbo.hu.

Terrain description

Sprint area is planned in the area that combines urban setting and forested area with numerous paths, open areas, abandoned buildings, and numerous man made features.

Middle and Long events are planned in an area of typical karst forest with numerous paths and roads, dense vegetation with large open areas. Altitude: 150m to 450m.

Some tricky steep sections may challenge riders. Stones and thorns are abundant.

Training opportunities

No official training camps will be organized before the World Cup, but the Organizers are happy to provide maps and help with organizing trainings upon request.

After the World Cup training opportunities will be offered on the maps used for 2010 and 2011 World Cup.

Model event will be organized Thursday afternoon accessible by bike from Tapolca.

Event Centre

Tapolca Event Hall
Alkotmány utca 7, Tapolca
N46° 53' 01" E17° 25' 43"

Accommodation

Five different classes of accommodation (hotel / guest house / dormitory / gym hall / camping) will be offered by the Organizers to ensure that all participants can find a place that suits their need and budget. No overnight possibilities exist near the finish areas.

Entry permits to Hungary

Hungary is a full Schengen member state. The following IOF full member countries require visa to Hungary: Belarus, China, Chinese Taipei, Colombia, Kazakhstan, DPR Korea, Moldova, Mongolia, Russia, South Africa, Serbia, Turkey, and Ukraine.

Visas have to be applied for at your nearest Hungarian embassy. The organizers will assist participants as required to obtain visas.

Please make sure that you allow for sufficient time (at least 3 months) for invitation letters and visa processing.

Please note that visa regulations are subject to change. Please double check your specific visa requirements.

Local weather

Middle of April in Hungary is characterized by mild sunny weather: 16-21C in the daytime, 5-10C in the night, with 7 hours of sunshine on average.

Please note that April weather is notoriously unpredictable. Meteorological records show temperatures as low as -4C and as high as +27C. "April is capricious" according to Hungarian folk wisdom.

Important deadlines

World Cup

Preliminary entries (accommodation booking deadline)	28 February
---	-------------

Entry of teams	11 March
Full payment	11 March
Request for transportation	11 March

Final modifications	25 March
---------------------	----------

Hungarian Cup and Tapolca Sprint

Reservation of accommodation	11 March
Entry	25 March

Additional information

Sándor Tálas: info@mtbo.hu, M: +36-20-364-2734